

# DEPARTMENT OF GEOGRAPHY



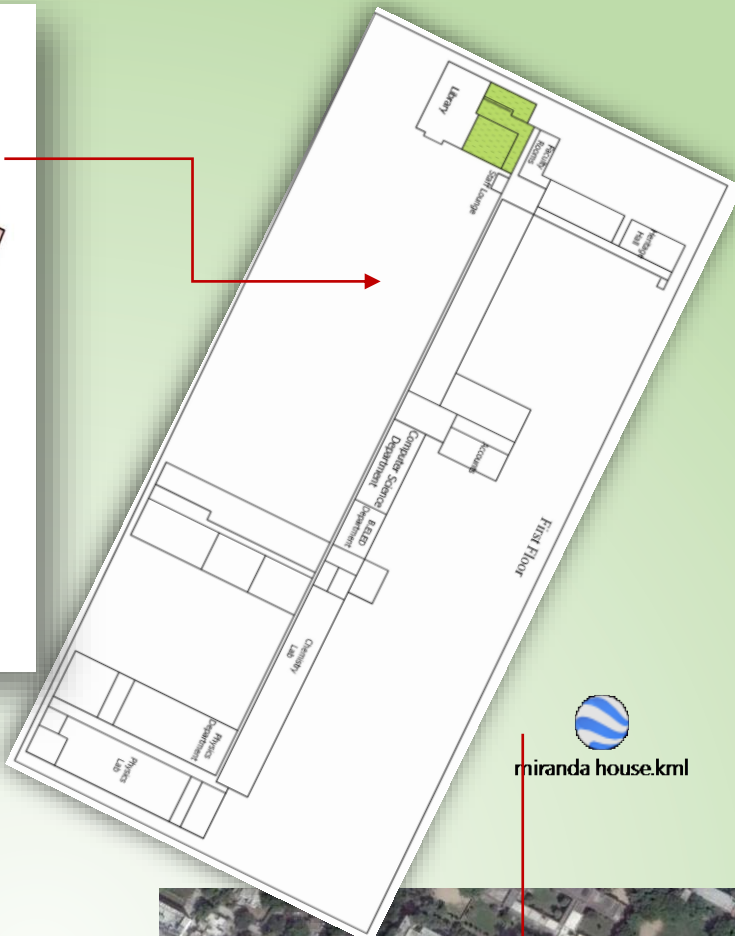
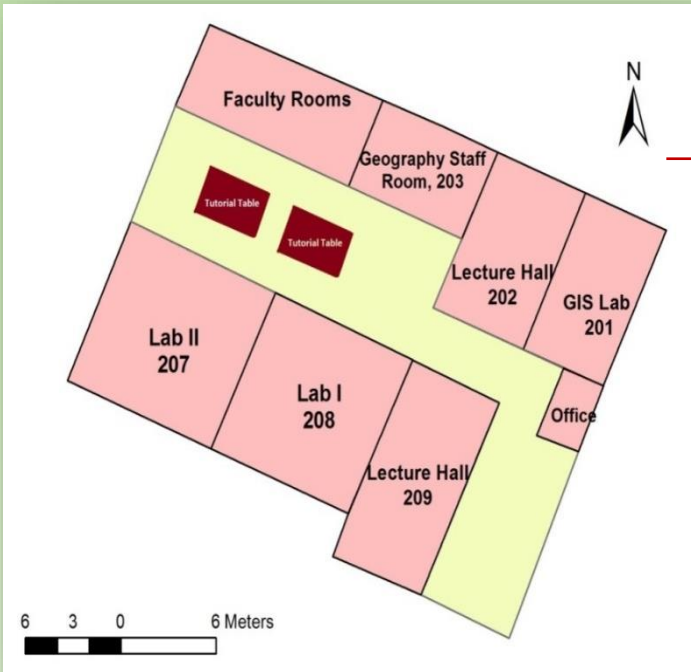
MIRANDA HOUSE  
University of Delhi

*Celebrating 50 Glorious years of the  
Department of Geography*

## MIRANDA HOUSE UNIVERSITY OF DELHI

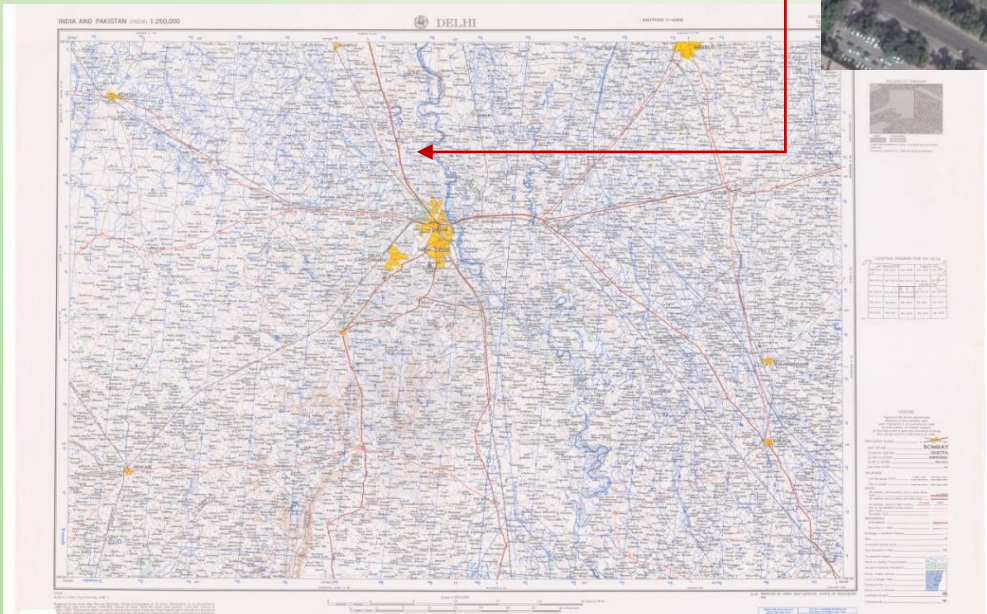
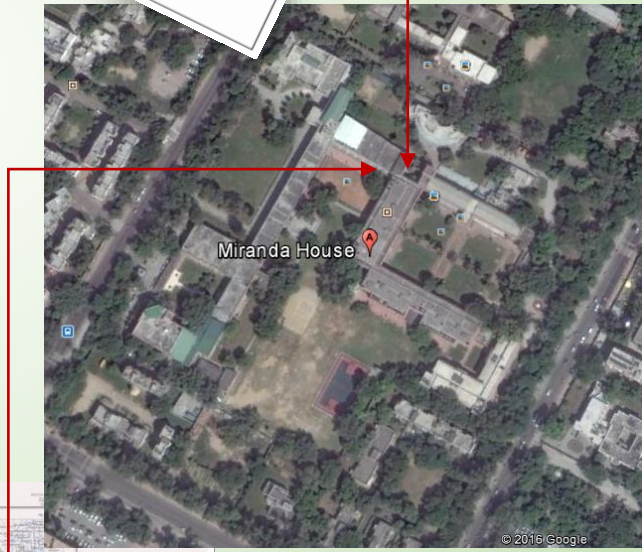






  
miranda house.kml

# Department of Geography at Miranda House



# ***DEPARTMENT OF GEOGRAPHY***

*In 1965, Miranda House became the first women's college to offer Geography as a discipline at the under graduate level. Since then it has maintained a tradition of high academic and co-curricular excellence in, both, the B.A. Honours and B.A. Programme courses.*



In a world challenged by diminishing resources, a rapidly growing population, and increasing tensions over cultural values, economic development and environmental issues, **Geography** as a discipline looks into the dynamics of global change and their local experience in. Geography helps to explain many aspects of modern society and plays a major role in answering fundamental environmental, socio-economical, cultural and political questions. It is an intellectually challenging subject that synthesizes appreciation of critical thinking and synergizing sciences with Humanities .

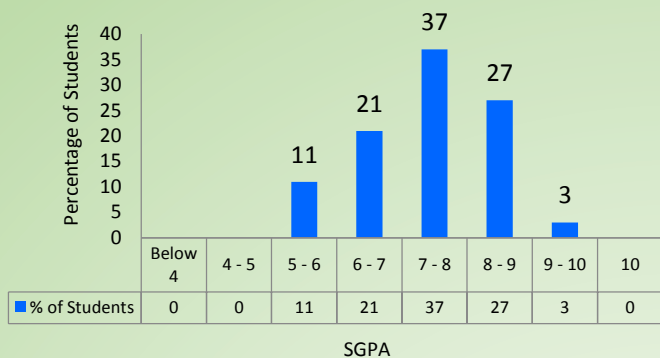
Geography's diversity is its strength.



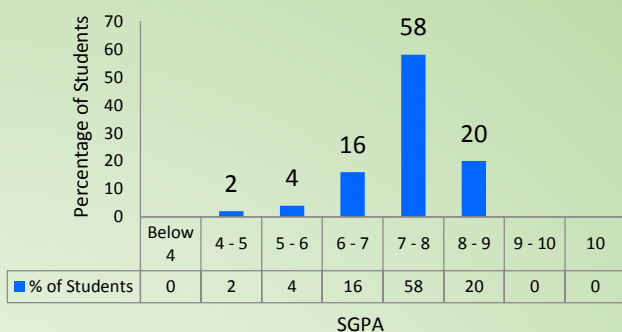


# Academic Performance

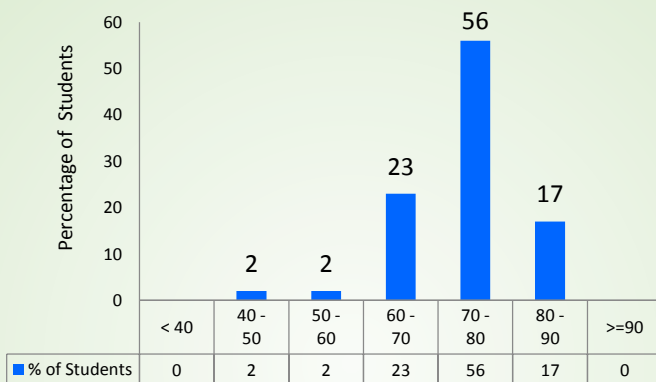
### BA (H) Geography CBCS (I Yr I Sem)



### BA(H) Geography CBCS (II Yr III Sem)

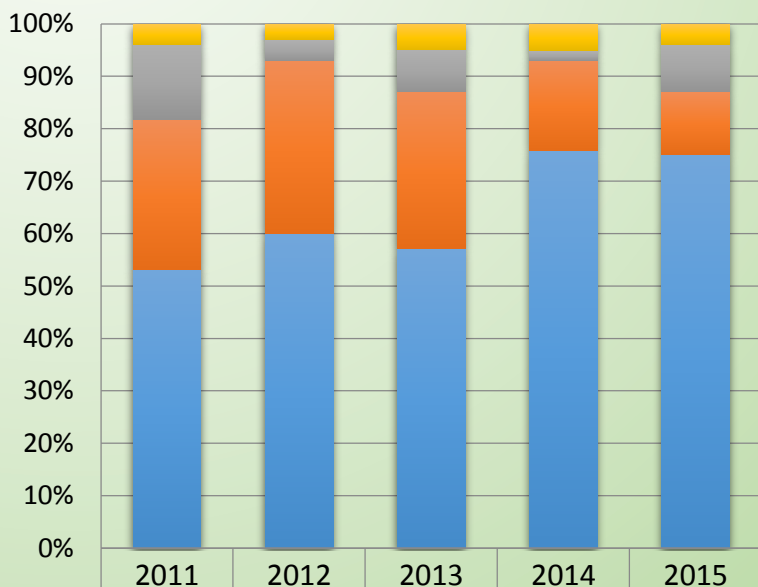


### BA(H) Geography (III Yr V Sem)



Percentage of Marks

### ANNUAL RESULT ANALYSIS-B.A.(Hons.) GEOGRAPHY, MIRANDA HOUSE-2011-15



**Sanjana Kumari** (BA Geography hons III Year, Batch of 2016) receiving Golden Jubilee Award for Humanities 2015-16.

	2011	2012	2013	2014	2015
Failed/Not appeared	4	3	5	5	4
III Division	14	4	8	2	9
II Division	29	33	30	17	12
I Division	53	60	57	76	75

# *Our Best Practices*



Knowledge building along with **capacity building** enables the enhancement of students abilities to understand and deal with real life situations. Capacity building augments a student in durable and enduring manner such that they carry the seeds of such learning beyond the classroom, throughout the life as it encompasses and acts as a bridge between learnt knowledge and real world.

**Peer Learning** creates reciprocal learning avenues involving contribution to knowledge, ideas and skill built up among students. It is envisaged as a method of progressing to mutual learning. It crafts informality within a formal environment focusing on team work and co-operation.



## *Remedial Classes*



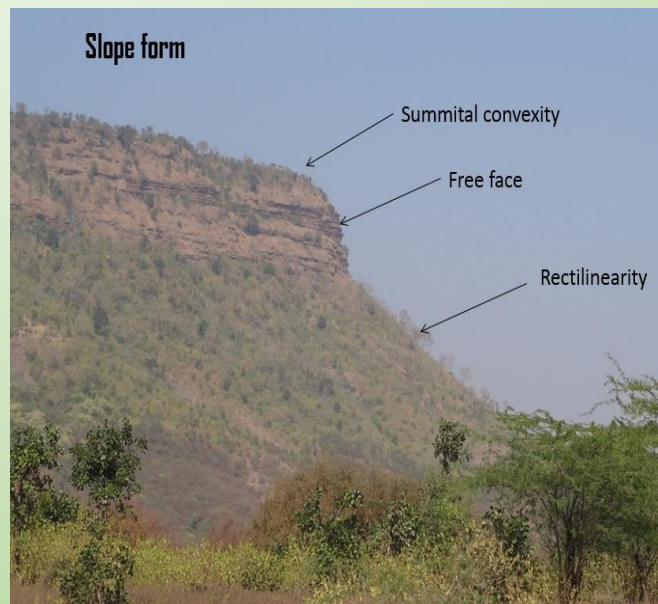
Remedial Classes are held to help students to learn to achieve their potential. Many have to be mentored, cajoled or pushed to bring out their best. Faculty members discretely monitor their attendance, written assignments, practical record works, and try to understand their challenges-whether they are language skills, health related or emotional. Students are encouraged to be self confident.



# Fieldwork



Essence of Geography lies at the interface of nature, culture and technology. Fieldwork makes geography comes to life. It provides opportunities to **learn through direct, concrete experiences**, enhancing understanding that comes from **observing the 'real world'** manifestations of abstract geographical concepts and processes. It provokes and raises curiosity, and teaches collaborative working, thereby improving **observation skills** and facilitating better understanding of the processes that contributed to the development of environmental features. **Increasing geographical interest** through interacting with the environment. Directly involving students in responsibility for learning: fieldwork requires that students plan and carry out **learning in an independent manner**.





# Innovation and Research

Climate Variability, Water Security, and Livelihood Resilience: Role of Traditional Knowledge and Modern Technologies in Rajasthan, India  
INNOVATION PROJECT MH 301  
(2015-16)



The Department is known for its research and innovation practices over the years. The Department in collaboration with **Delhi University Innovation Project** has taken initiative to work on immediate issues *including Gender and Development, Climatic Variability and Disaster management and Preparedness*

## NEIGHBOURHOOD MAPPING

ASSESSMENT OF DISASTER RISK AND VULNERABILITY  
IN AND AROUND UNIVERSITY OF DELHI, NORTH CAMPUS  
2016



SUBMITTED TO  
JNU DRP



SUBMITTED BY  
MIRANDA HOUSE





# *Facilities at the Department*



GIS Laboratories equipped with 20 computers for training in computerized cartography and remote sensing.



The first Automatic Weather Station of Delhi University was installed in Miranda House on 29 January 2016.



Availability of GPS and GPS enabled camera



Smart Class Room



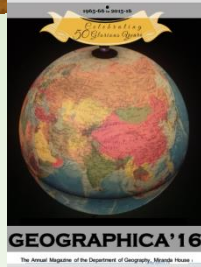
Cartographic laboratories with seating capacity of 40 students



Department library with essential reading.



# Life in the Geography Department



The Geography Society celebrates its annual festival 'GLOBE' with wide participation from students across the University.



The annual Magazine 'Geographica' is published by collaboration between the students and teachers of the department. Last year we celebrated the Golden Jubilee year of our Department, where the past and the present mingled joyously.





# *Future Plans*

Focusing up on our research in disaster mapping, preparedness and risk mitigation, we have applied for opening up a centre for capacity building in critical areas for disaster management under the XII plan Guidelines for Deen Dayal Upadhyaya Centres for Knowledge Acquisition and Upgradation of Skilled Human Abilities and Livelihood (Kaushal) in Universities and Colleges. The centre proposes to offer:

- PG Diploma course in Risk Resilience and Disaster Management (RRDM)
- Short Term Training Programmes for Training the Trainer (TOT) in Disaster Risk Reduction Management (DRRM)
- Empowering and training women leaders in local bodies especially training of Women personnel in law and governance

The department is keen to take up more research projects involving more student researchers. It aims to collaborate with other research organizations and foreign exchange programmes.



DEPARTMENT OF GEOGRAPHY  
MIRANDA HOUSE  
UNIVERSITY OF DELHI  
DELHI-110007

